



WWW.ZILLACRETE.COM



SEAMLESS FLOORING SYSTEMS FOR CANNABIS FACILITIES

Cannabis grow facilities need their own system when it comes to flooring. Our unique epoxies tolerate moisture and stand up to a broad range of chemicals, fertilizer, and extreme pH substances. Our flooring systems also eliminate the cracks and crevices which hold bacteria and microbes that are harmful to cannabis plants.



**EXTREMELY
DURABLE**



**STAIN
RESISTANT**



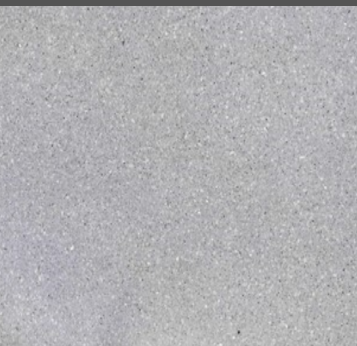
**CHEMICAL
RESISTANT**



**EASY
CLEANABILITY**

RECOMMENDED SYSTEMS FOR CANNABIS GROW FACILITIES

ZILLA-POXY



THIN-MIL EPOXY SYSTEM

THIN-MIL EPOXY PROVIDES AN ECONOMICAL OPTION WHICH IS ALSO EXTREMELY DURABLE, REFLECTIVE AND CHEMICALLY RESISTANT

- FOR NEW CONSTRUCTION PLEASE ADD ZILLA-CRETE MOISTURE MITIGATION PRIMER
- 25 MIL COMPLETE SYSTEM
- 100% SOLIDS EPOXY
- HIGH WEAR UV STABLE URETHANE TOP COAT
- CHEMICAL AND STAIN RESISTANCE

RECOMMENDED FOR:

- GROW HOUSES
- PROCESSING AREAS
- SHIPPING AND RECEIVING

ZILLA-TALLIC



DECORATIVE METALLIC EPOXY SYSTEM

DECORATIVE METALLICS OFFERS EXCEPTIONAL STRENGTH AND ARCHITECTURAL DESIGN APPEAL

- ENDLESS DESIGN AND METALLIC COLOR OPTIONS
- DURABLE SCRATCH AND IMPACT RESISTANT COATING
- NON-STAINING AND EASILY CLEANED
- WITHSTANDS HARSH CHEMICALS AND DETERGENTS
- MULTIPLE INSTALLATION TECHNIQUES FOR DIFFERENT LOOKS
- INTEGRAL COVE

RECOMMENDED FOR:

- RETAIL OUTLETS
- SHOWROOMS
- WAITING AREAS

ZILLA-CRETE



URETHANE CEMENT SYSTEM

URETHANE CEMENT IS YOUR SOLUTION FOR AREAS WHICH EXPERIENCE THERMAL SHOCK OR SEVERE MOISTURE ISSUES

- OUTSTANDING THERMAL SHOCK RESISTANCE
- UNMATCHED MOISTURE VAPOR PROTECTION
- DESIGNED FOR THE MOST STRENUOUS ENVIRONMENTS
- WIDE COLOR SELECTION
- INTEGRAL COVE
- 1/8" - 1/4" SYSTEMS

RECOMMENDED FOR:

- FACILITES THAT EXPERIENCE HEAVY IMPACTS
- WASHDOWN AREAS
- FACILITES WITH ONGOING CONCRETE MOISTURE ISSUES

